

- NOTES:-
1. All dimensions are in millimeters unless otherwise specified.
 2. Level and slope of the pipe shall be as instructed by the Engineer on site.
 3. Concrete for headwall, apron, toe wall to be C20/25.
 4. Concrete for blinding to be C12/15.
 5. A252 Fabric mesh reinforcement to B.S. 4483 to be placed as shown.
 6. Cover to Fabric mesh to be 40mm.
 7. Concrete pipe shall be of strength class min 120.

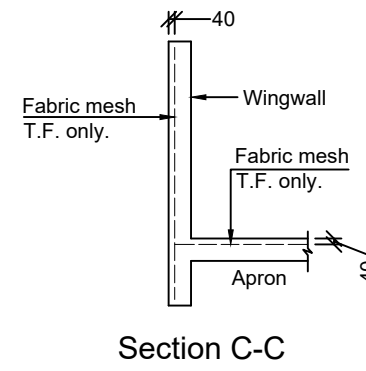
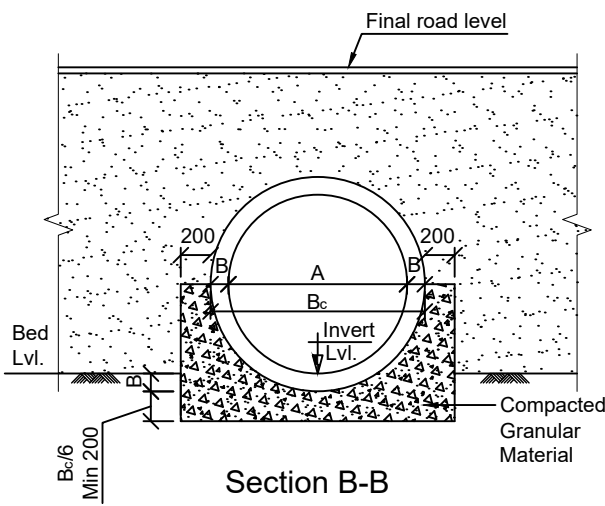
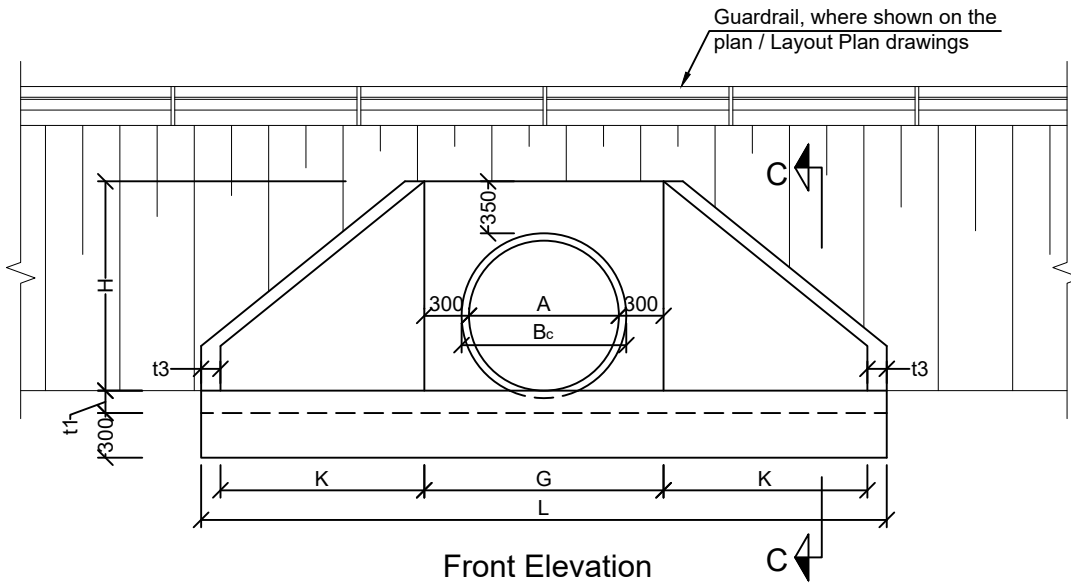


Table														Quantity		
Culvert Diameter (m)	A (m)	B (m)	G (m)	H (m)	J (m)	K (m)	L (m)	M (m)	N (m)	P (m)	t1 (m)	t3 (m)	t4 (m)	H _c (m)	Culvert Diameter (m)	Concrete C20/25 inlet and outlet
1x0.60mØ	0.60	0.05	1.20	1.00	1.75	1.01	3.48	2.02	2.11	1.46	0.15	0.13	0.09	0.9-4.5	1x0.60mØ	2.468m ³
1x0.90mØ	0.90	0.09	1.50	1.34	2.43	1.40	4.57	2.81	2.89	1.76	0.15	0.13	0.09	0.9-4.5	1x0.90mØ	4.096m ³
1x1.20mØ	1.20	0.10	1.80	1.65	3.00	1.73	5.61	3.46	3.58	2.15	0.20	0.17	0.12	0.9-4.5	1x1.20mØ	8.002m ³